

E-Learning from nature: Picking from nature the inspiration to teach and learn science

Ana Isabel Pereira, Olga Ferreira, Maria Filomena Barreiro, Amílcar Teixeira, Paulo Cortez, Carlos Aguiar
Instituto Politécnico de Bragança, Campus de Santa Apolónia, 5301-857

The project:

PARTNERSHIP

8 partners from 7 different European countries are involved in the project:

IIS Federigo Enriques (Italy)
INFOREF (Belgium)
Limerick Institute of Technology (Ireland)
Epimorfotiki Kilika (Greece)
Pixel (Italy)
Trakai Educational Assistance Authority (Lithuania)
Instituto Politécnico de Bragança (Portugal)
Fundatia EuroED (Romania)

For information please contact:

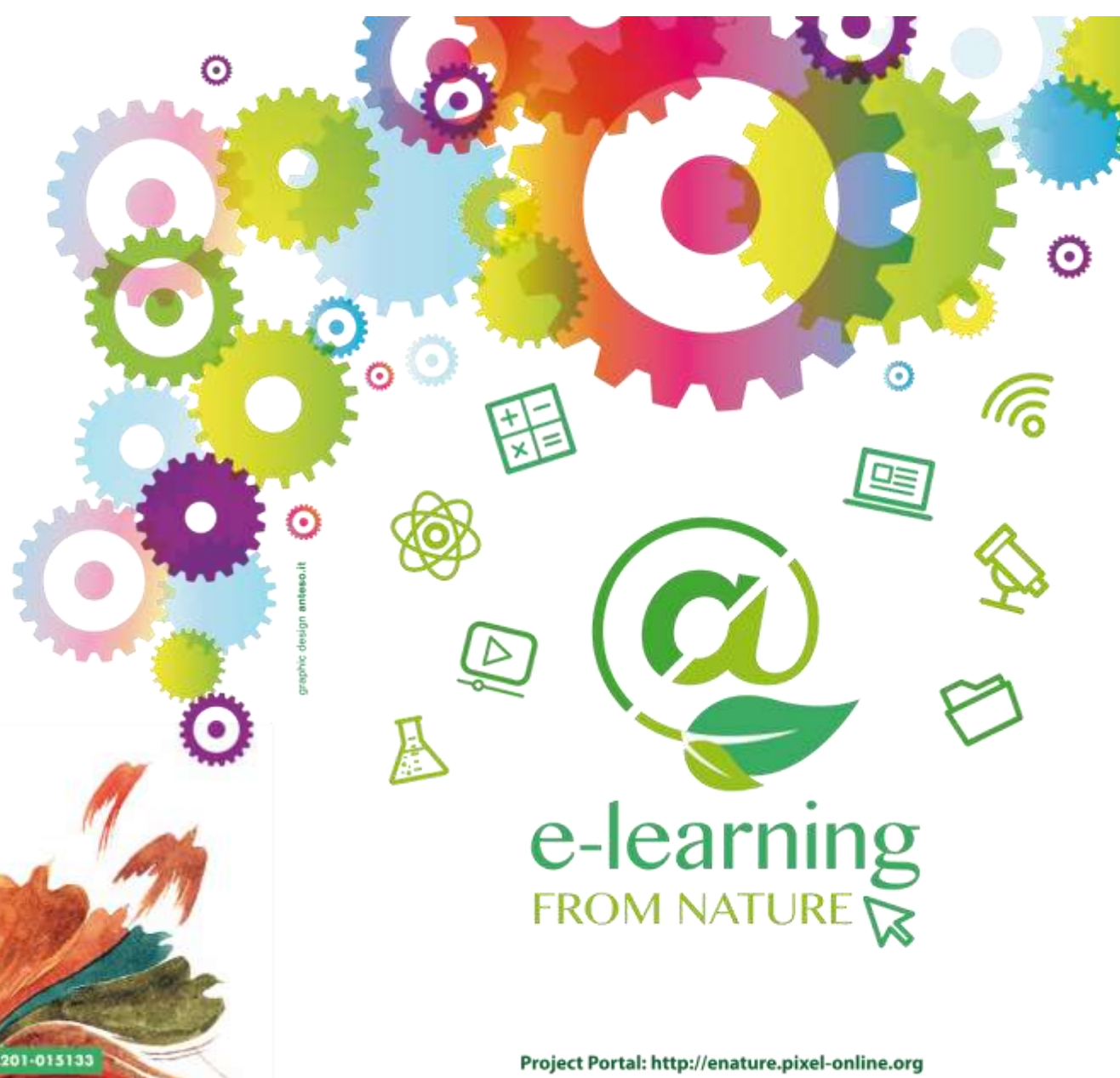
Andrea Conforti
IIS Federigo Enriques
Tel: +39 3406134052
e-mail: enature@isisenriques.gov.it

Co-funded by the Erasmus+ Programme of the European Union

This project has been funded with the support from the European Union. This material reflects the views only of the author, and the Commission cannot be held responsible for any use which may be made of the information contained therein.

Project Number: 2015-1-IT02-KA201-015133

Project Portal: <http://enature.pixel-online.org>



Portuguese network of schools, teachers and students:

| School | Teachers involved | Students involved |
|---|---|-----------------------|
| Agrupamento de Escolas Miguel Torga (Bragança) | 3 teachers (Biology, Physics/Chemistry and English) | 20 (age range: 16-17) |
| Agrupamento de Escolas Emídio Garcia (Bragança) | 7 teachers (Biology, Physics/Chemistry, Geography and English) | 26 (age range: 14) |
| Agrupamento de Escolas Abade Baçal (Bragança) | 5 teachers (Biology/Geology, Physics/Chemistry, Mathematics, English) | 50 (age range: 14-18) |
| Agrupamento de Escolas de Mirandela (Mirandela) | 5 teachers (Biology/Natural Sciences, Physics/Chemistry, English) | 20 (age range: 14-18) |
| Agrupamento de Escolas de Macedo de Cavaleiros (Macedo de Cavaleiros) | 3 teachers (Biology, Physics/Chemistry and English) | 20 (age range: 14-18) |

Students in practice:



Brief description of the geographical areas and corresponding Natura 2000 code:

| Geographical area | Brief description | Natura 2000 code |
|--|--|------------------|
| Azibo Reservoir Protected Landscape | Azibo reservoir consists of 3 watercourses, Azibo, Azibeiro and Reguengo, belonging to the river Sabor (tributary of Douro River) basin. Located in the transition region between Terra Fria (Cold Land) plateau and Terra Quente (Hot land), it is inserted between medium altitudes of 500 to 700 meters. | PTCON0023* |
| Douro International Natural Park | The Park covers the border stretch of the Douro river, including its valley and adjacent plateau surfaces, and extends south through the valley of its tributary, the river Agueda. This granitic area is characterized by a microclimate, with low rainfall and mild winter temperatures (hot land). | PTCON0022 |
| Montesinho Natural Park | The Park is a protected area of 74 229 ha, located in the municipalities of Vinhais and Bragança, in the northeast Portugal. This mountainous region, named Terra Fria (Cold Land) is characterized by a succession of rounded elevations and valleys deeply embedded, with altitudes ranging between 438 and 1481 m. | PTCON0002** |
| Landscapes of Serra da Nogueira | Serra de Nogueira is a small mountain complex reaching 1375 m, part of Natura 2000 site Montesinho/Nogueira it is located in the municipalities of Bragança, Macedo de Cavaleiros and Vinhais, in the northeast Portugal. This area is included in the "Terra Fria" (cold land). | PTCON0002** |
| Cork oak forests of Jerusalém do Romeu | Located in Trás-os-Montes, the Natura 2000 region of Romeu was created to protect two of the most well preserved habitats of Cork oak. This site occupies an area of 4768.59 ha, located between Mirandela and Macedo de Cavaleiros and includes a small areas of olive grove and Douro Wine Region vineyards. It has a typical mediterranean microclimate (hot land). | PTCON0043 |

* Azibo Reservoir Protected Landscape is a protected regional/local area. Part of the region is included in the Natura 2000 region Morais (PTCON0023)

**Montesinho and Nogueira are included in the same Natura 2000 region (PTCON0002)

Conclusions and future work:

Apart from the work to be done at national level, a fruitful cooperation is expected from the exchange of experiences among the international partners. All the produced materials will be available in an online portal for the community. In a second phase of the project, a guide for science teachers focusing innovative methods to enhance students' motivation to study scientific subjects and improve their basic skills in science will be developed as a result of the cooperative effort between partners.

Acknowledgments:



Co-funded by the Erasmus+ Programme of the European Union

The European Commission support for the production of this publication does not constitute an endorsement of the contents which reflects the views only of the authors, and the Commission cannot be held responsible for any use which may be made of the information contained therein.